



President’s Message

By Vickie Hite, President, OLLI-CSUF

Here we are, one month into a new year. Our Spring/Summer registration is off to a good start.



Registration opened on December 12th and by January 2nd we had 49 registrations, 14 of those being new members. This is a good start to our new year.

In February we will celebrate our 90+ Club members and our 45th

anniversary with a social on Friday, February 14th. Everyone is invited to attend what is planned to be a fun celebration of our 45 years of OLLI and many of the members who helped drive the vision of our organization to fruition. If you are new to OLLI, come and see how we honor our members who have reached the age of 90 years or more with at least five years of membership with OLLI. It is an amazing group of lifelong learners and OLLI leaders.

In March we will participate in our biggest fundraising opportunity of the year, Titan’s Give. This Day of Giving will happen on Wednesday, March 12th. This is a campus-wide fundraiser with the chance to earn large amounts of matching funds from different corporate sponsors. Last year our members were very generous. Two hundred and sixty-three of our members donated \$31,835. Because we were smart and worked with the different “challenges” that offered rewards and matching funds, we were rewarded with an additional \$15,725, for a total of \$47,560. We were second in total donors only to the water polo team! We will be announcing more information next month on how we can, again, maximize the matching dollars to drive our dollars even higher this year.

While thinking about this opportunity in fundraising I started to ponder the difference between donating and sharing. So, I consulted with one of my advisors, Google, and this is the difference we came up with regarding these two words. To donate can mean “to give money or goods for a good cause, for

TouchNet:

OLLI’s New Registration System

By Daisy Thomas, Olli Executive Director

On my first day of work, April 8, 2024, I met with Campus Information Technology team members, who assist OLLI with all our online processes.

I was surprised to find out that they created a Microsoft, home-grown web interface for receiving initial registration information from OLLI members. This meant that every piece of information typed in by an OLLI member was entered manually by a systems engineer into an excel spreadsheet for backend reporting. This practice was time-consuming, laborious and not sustainable for the longevity of the academic program.

Through listening to OLLI members and the OLLI Board of Trustees, a growing list of office operational needs was forming. I wanted to explore all our data system options in order to advance our technology processes at OLLI.

At this time last year, our new Data Systems Engineer, Rishitha Bathini, was an OLLI Student Assistant. I learned that she was a CSUF graduate student in Computer Science. Her first assignment from me was to gather information on all OLLI Programs in California as to what data systems they were using.

The “TouchNet” system was the prevailing answer. I also found out that TouchNet was vetted and widely used already at CSUF.

A second data system, Salesforce, primarily used for customer and/or client tracking by private companies, appeared to be a powerful backend reporting tool for an OLLI membership management system. It was already being used by Extension Programs at CSUF for their students.

I realized that a combination of using TouchNet as an easy customer experience front-end system and using Salesforce, a cloud-based tool that could hold all OLLI historical data and move our organization forward was the goal with a launch date of January 2025.

President Vickie Hite
 Vice President Administration Robert Kovacev
 Vice President Programs Sue Batic
 Vice President Communication Jim Di Tota
 Vice President Membership Debbie Maxwell
 Vice President External Relations Bill Sampson
 Vice President Facilities Anthony Gonzalez
 Vice President Hospitality Lisa Sewell
 Vice President Technology Paul Herrick
 Treasurer Ann Sparks
 Secretary Renee Cabrera
 Chris Shaw (tashawc01@gmail.com), Editor; Valerie
 Orleans Assistant Editor; Keni Cox, Alice Gresto, Lew
 Livingston, Elaine Mitchell, Mary Sampson,
 Staff Writers

Photography Coordinator: Jim Di Tota
 Desktop Publishing: Corina Pineda & Akemi Tanga

President's message ... Continued from Page 1

example to a charity.” To share can mean “to give or receive a part of something, or to enjoy or assume something in common.” I like the idea of asking you to share with OLLI this March. Sometimes when we are asked to donate, we may feel that what we have to offer may be too small to make a difference. But when we share, especially with others whom we share a common interest with, we can feel generous regardless of the amount. A peanut butter sandwich shared with a friend is just as meaningful as sharing a steak and a bottle of wine. The act of sharing some of what you have with someone or an organization, can feel more like a good deed than an obligation.

So, this year I am going to ask you to share what you can with OLLI, especially in March for the Titans Give Day of Giving. I also hope that you will share some of your time to make our organization run smoothly.

Betty Robertson Award Goes to Azam Dini

By Alice Gresto, Staff Writer

The Betty Robertson Award is granted each year by OLLI in memory of Betty Robertson, “The Godmother of OLLI,” who tirelessly worked to create a program for continuous learning for seniors. The award is given to an older CSUF student graduating with special recognition for their achievement and devotion to lifelong learning.

This year’s award winner is Azam Dini. Born into religious family in Iran where boys and girls are not regarded equally, girls often married young to escape the strictures imposed by their fathers or brothers. Azam desired to chart her own course and advocate for women’s independence. School became a refuge.

During her third year of high school, she was reported for possessing forbidden books, prompting her father to destroy her books and diaries and banning her from further education. Finally, her father agreed to allow her to move to the United States to continue

her studies with her brother’s support.

Attending a Catholic university in America marked the start of a new journey. She was amazed to meet so many people from diverse races and ethnic groups. After completing the English as a Second Language program, she had to pass an entrance exam. She did and chose to major in social work.



Azam Dini

At the University of Detroit, she followed the examples of other students praying in small chapels across campus, often to God or Mary. She felt Mary understood the struggles women faced.

After two years of study the Iranian Revolution took place. She decided to return to Iran to visit her family and the graves of her friends, unaware that this decision would end up preventing her return to the United States.

The new Islamic government shut down the universities. She was hired as a literature teacher due to her religious background and knowledge in the field. Soon the moral police began raiding schools, arresting students involved in political groups. She helped five students escape. Two days later she was arrested.

She spent over six years in Evin Prison, often subjected to torturous interrogations. During those days, over 30,000 students across Iran were executed. Her last two years were spent in the “tombs.” In the darkness of solitary confinement, she returned to prayer. There she found hope.

It took years to begin the healing process. After her parents’ deaths, she married a friend from her time in Michigan. Seventeen years later, her husband decided to move the family from Iran to California. He had a secret plan to divorce her and take the children. Upon discovery of the plan, Azam separated from him and applied for asylum. He reported her as an unfit mother and she lost her job. The case lasted from 2003 until she became a citizen in 2014 and got a divorce.

In the meantime, she earned an A.A. degree at Saddleback College and a bachelor’s in psychology at Cal State Fullerton. She got a part-time job at Fullerton College, but there was never enough money for rent, food and her children. She was in despair, but her faith in God and Mary kept her going, and she got a second job in Mental Health.

COVID hit and she lost her job of 12 years at Fullerton College. At age 60 it was not an easy decision, but she returned to CSUF for a master’s degree. In 2023 Azam earned her Master’s in Teaching English to Speakers of Other Languages. She now has jobs at North Orange Continuing Education and Santa Ana College. She states, “Both teaching positions affirm it’s never too late to follow your dreams and achieve success.”

By the end of April 2024, we formed an IT Implementation Team comprised of Jim Monroe, IT Expert, Paul Herrick, current OLLI VP of Technology, Raymond Venegas, CSUF IT Director, Rishitha Bathini and myself. We held working meetings once or twice a week until we officially launched our OLLI TouchNet system on December 12, 2024, three weeks earlier than expected. “Target X,” a new version of Salesforce for higher education, will be launched in March 2025.

I am very grateful for everyone at OLLI who provided their helpful input and feedback, as well as those who beta-tested the system. We appreciate everyone’s patience while we continue to streamline and simplify our processes. We are all a work in progress.

Who Was Betty Robertson?

By Alice Gresto, Staff Writer

I met Betty a few years after I joined OLLI. I was singing in the alto section of the OLLI Chorale. She was new to that group. Her dear friend, Char Oliva, had suggested to Betty that she might enjoy singing with the chorale. She sat down right beside me and we began a new friendship.

I asked her what she did prior to retirement. She answered that she worked in an office over at CSUF. She was a humble person with a fine sense of humor and a love of music. She just hoped she could sing ... she could. One would never have guessed her background or the role she played in the inception and development of CLE, Continuing Learning Experiences, which eventually was renamed OLLI.

Today we know Betty as “The Godmother of CLE (OLLI).” You will see her name in large letters on the bottom of the plaque that



Betty Robertson

is installed on the left, just outside the door to the OLLI office. It is her name that is associated with OLLI’s Betty Robertson Award.

Betty was born in Dayton, Ohio, and raised in Seattle, Washington. She attended the University of Washington where she met her future husband, Ken, in her freshman year, on a blind date at age 19. He went off to serve in

World War II, and they kept in touch through the mails. Eventually she transferred to Mills College in Oakland, California, where she earned a B.A. in Economics. Soon Ken returned and they were married.

In 1950 they decided to put some adventure into their lives, so they quit their jobs and spent six weeks exploring the United States and Mexico. Then they headed to California, buying a home in Santa Monica, where Ken became the wage-earner and Betty spent the next eight years involved in civic projects and making a home for their family of four children.

In 1958 they moved to Fullerton where they built a home in Sunny Hills. Once the children were doing well in school Betty returned to her studies at CSUF where she received a Master’s Degree in Communications in 1973. She began working in CSUF’s Office of Extended Education where she was the Director of Community and Outreach Programs.

Her “charge” was to develop university-level offerings for groups not being served by the CSUF state-supported degree programs. The goal was outreach to new people who could benefit from university-level experiences. The growing number of retired professionals in the aerospace business and education were the natural prospects for this effort. She wrote the original Partners in Education grant. It was based on the concept that members would pay their own way and be volunteers in developing their own organization. This included developing programs using their expertise—a program of, by and for retirees. This became CLE, now OLLI.

After 13 years Betty retired from CSUF in 1988. She and Ken promptly joined CLE where she remained active from its inception. Ken, the love of her life, passed away in 2003. Family, friends, CLE/OLLI and travel were the treasured parts of her life until she passed on in 2013.

An announcement of her death in November 2013 read: “Although there is sadness at the end of her life, there is also strength, gratitude and happiness in knowing she has lived a wonderful, full life as daughter, sister, spouse, mother, aunt, mother-in-law, grandmother, great-grandmother, friend, mentor and Godmother for CLE/OLLI.”

Hospitality's Holiday Luncheon: December 11, 2024

Photos by Jim Di Tota



Wonderful.



Dazzling!



Invitation to OLLI’s 45th Anniversary Celebration Friday, February 14, 2025

For those of you who missed OLLI’s 45th Anniversary Celebration, held in the Bacon Pavilion in the Fullerton Arboretum, or even if you were there, this is an opportunity to celebrate in the casual atmosphere of rooms A-D of the Shapiro Wing of the Ruby Gerontology Center. We will also be honoring our age 90+ Club members as our “OLLI Sweethearts” since we are celebrating them on Valentine’s Day.

The event will take place on Friday, February 14, from noon to 2:00 p.m. We will serve food from Panda Express, with choices of orange chicken and b r o c c o l i beef. There

will also be chow mein, drinks and

Since the be ordered starts, and occupancy

are limited, people planning to come will soon be asked to make their wishes known. Watch for details on how and when to sign up in the OLLI weekly newsletters and the event flyer.

This is a chance to meet members you might not know, reconnect with friends you may not have seen for a while, celebrate our organization’s continuing relevance to lifelong learners, have some good food and have a good time.



fried rice and as well as soft desserts.

food has to before the event because room

and seating

Age	Rate Before Increase	Rate After Increase
70	5.9%	6.3%
75	6.6%	7.0%
80	7.6%	8.1%
85	8.7%	9.1%
90+	9.7%	10.1%

Once you fund a gift annuity, your rate and your payments never change, no matter what the economy does. For more options and even higher payments, ask us about a deferred gift annuity. By waiting a few years for your first payment, you can receive an even higher rate. No matter what type of gift annuity you fund, you will have the unparalleled satisfaction of knowing that after a lifetime of payments to you, any funds remaining in the gift annuity support OLLI-CSUF.

IRA to CGA Provision: The Secure Act 2.0 of 2022 created a provision to allow you to fund a CGA with a one-time transfer from an IRA’s required minimum distribution (RMD). In 2025, a qualified charitable distribution (QCD) of up to \$54,000 can be used to fund a CGA. While the QCD qualifies toward your RMD and avoids income tax, the annuity payments are taxed as ordinary income since the IRA funds have not been previously taxed. Contact us for details.

Tax Benefits: When you call us to find out your rate, we will also let you know about your income tax deduction and possible capital gains benefits. There is no guesswork. What you start today, gives back to you for life.

Payments for One or Two: When you fund a gift annuity for two people, such as you and your spouse, payments will continue at the same rate, in the same amount, for as long as either of you live. Rates on two-life CGAs are good, but rates for one-life CGAs are even more attractive.

Big Impact: When you fund your gift annuity, you receive the fixed payments and tax benefits, but you also do something more. After a lifetime of payments to you (or you and your spouse), all funds remaining in your gift annuity support OLLI-CSUF.

Call or email us to learn how a gift annuity can benefit you and OLLI-CSUF. As always, this information is not intended as legal or tax advice. Please consult your professional advisors for legal and tax guidance.

Planned Gifts to support OLLI-CSUF are coordinated through University Advancement. Please visit www.csufplannedgift.org or contact us to learn about all of the benefits of making a charitable bequest and how it can help OLLI-CSUF continue our important work. If you’re interested in establishing your legacy and making a lasting impact at OLLI-CSUF through membership in the Ontiveros Legacy Society, please contact our Office of Planned Giving at 657-278-3947 or CSUFPlannedGift@fullerton.edu.

Charitable Gift Annuity Rates Stay High for 2025

by Hart Roussel, Senior Director of Planned Giving, University Advancement, CSUF

Charitable Gift Annuities (CGA) have always been a great idea. The gift annuity provides a fixed rate of return on your gift during your lifetime and the remainder benefits the charity of your choice, like OLLI-CSUF. When you fund a gift annuity today, your payments will be at higher rates than in recent years. The American Council on Gift Annuities (ACGA) recommended increased rates for CGAs in 2024 and they remain in place for 2025. The increased rates reflect the interest rate environment of the last two years. Here is an example, based on rates for a one-life CGA of how current rates have increased;

Big Thank You for Your Tremendous Outpouring of Donations to OLLI's Basic Needs Initiative

By Debbie Kegel, OLLI-CSUF Basic Needs
Initiative Coordinator

Since January 2024, OLLI-CSUF Basic Needs Initiative collected donations for CSUF students. Its goal was to make it easier for OLLI members to help students improve their well-being and, in turn, their academic performance. Members contribute non-perishable food, as well as lightly used professional and business casual clothes, hygiene products and school supplies for pre-kindergarten children. In addition to supporting students, your contributions also help raise awareness among CSUF leadership of OLLI and its commitment to student success.

In 2024, OLLI members contributed nearly 1,400 pounds of food to the Pantry. Cristina Medina Truong, former Director of the Titan Student Union Services and Food Pantry (a part of the Associated Students Inc.), said in a note extending her “heartful thanks” to OLLI, “Together, we are making a meaningful difference in the lives of students in need.”

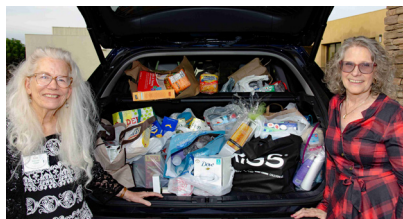
During the year OLLI members contributed nearly 1,300 items of clothing, of which 80%, more than 1,000 items of professional and business casual items of clothing, went to Tuffy's Career Closet; the remainder went to the LGBT Gender Affirming Closet and TitanWELL. More than 1,000 hygiene items were contributed to Basic Needs Services. Victoria Ajemian, Director of Basic Needs Services, wrote, “As Tuffy's Career Closet and hygiene products are our most utilized services by CSUF students and rely on donations, your contributions have allowed students to continue accessing these services. Your generosity and support ... is beyond appreciated.” Additionally, nearly 150 items were donated to the Children's Center.

A bin in Shapiro lobby is always available for member convenience. In addition, we owe a big thank you to the coordinators of two special events: for the March Austin Nation special performance, Barbara Rosen, Eclectics Coordinator; and, for the December Holiday Luncheon, Lisa Sewell, Vice President Hospitality and her fantastic planning committee. You can see from the picture with Lisa Sewell (left) and Debbie Kegel at the Holiday Luncheon, our members' generosity filled the car to the brim! Fifteen percent of our donations for the year were collected at these two events.

In addition to our regular collections, in the coming years, you can look forward to scheduled days to drop off your home-grown produce at our “Reverse Farmers' Market.” We are also meeting with TitanWELL to learn more about opportunities to collect athletic

wear on scheduled days (possibly around Earth Day in April and Titan Manufacturing Day in October).

Please continue to drop your contributions in the bin.



Lisa Sewell & Debbie Kegel



President Ronald S. Rochon

CSUF's New President Ronald S. Rochon

By Chris Shaw, Editor

President Ronald S. Rochon assumed the presidency of Cal State Fullerton on July 22, 2024, becoming the university's 10th president since its founding in 1957. With over three decades in higher education, Rochon has dedicated his career to advocating for educational excellence, access and equity.

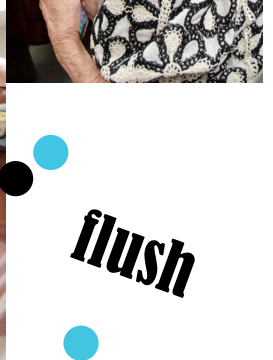
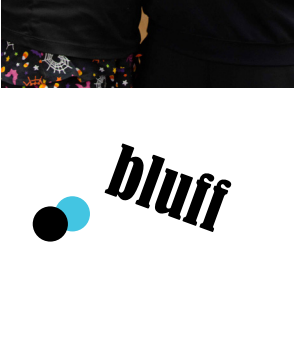
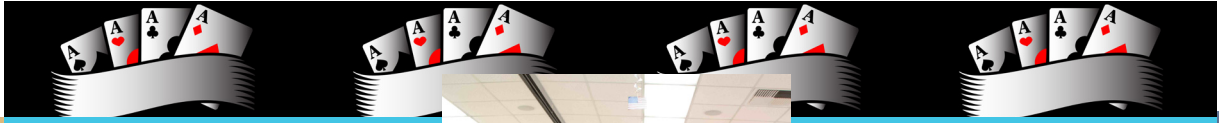
His prior role was president of University of Southern Indiana from 2018 to 2024, and he served as provost from 2010 to 2018. Prior to that at Buffalo State College in Buffalo, New York, he served as the inaugural dean of the School of Education, associate vice president for Teacher Education and professor. Prior to that, he was director and co-founder of the Research Center for Cultural Diversity and Community Renewal at the University of Wisconsin-La Crosse, as well as interim director of the School of Education and associate dean of the university's health and physical education college. His professional teaching career has included work at Texas A&M University, Washington State University and University of Wisconsin-La Crosse.

Nationally, President Rochon serves as the chair of the Board of Directors for the American Association for State Colleges and Universities (AASCU) and chair of the Board of Directors for the Community Anti-Drug Coalitions of America (CADCA) and has served as board chair for the American Association of Colleges for Teacher Education (AACTE).

A first-generation college graduate, President Rochon earned a bachelor's degree at Tuskegee University and master's and doctoral degrees from the University of Illinois at Urbana-Champaign. His doctoral work was in educational policy studies, with an emphasis on educational history and policy analysis.

Flashback: Poker with OLLI Flash Mob October 31, 2024

Photos by Jim Di Tota,



Dinner & “Best Of Bach” Concert Trip

COMING MARCH 3

On March 3, 2025, we will travel to Christ Cathedral in Garden Grove to attend the “Best of Bach” concert, featuring the Cathedral’s huge, newly refurbished organ and the Cathedral’s Choirs. This is a secular event, although some of the music will be religious in nature, because that is much of what Bach composed for the organ.

The Cathedral’s Hazel Wright Organ (aka “Hazel”) recently completed a multi-year, \$3 million refurbishment. It is the world’s 5th largest pipe organ, with 17,106 pipes and is now in superb condition.

Before our concert, we will enjoy a buffet style dinner at Lucille’s Smokehouse Bar-B-Que.

Signups begin January 27. Register through our new TouchNet system on OLLI’s website at <https://olli.fullerton.edu>. See the flyer for more information.

Member Retention Study Meeting

OLLI’s Vice President Administration Bob Kovacev initiated the commissioning of the CSUF College of Business and Economics, Dept of Management to research and determine ways OLLI can better retain its members. OLLI-CSUF Collaboration’s Janice Jeng mentored the CSUF team. On December 6, OLLI’s Committee on Member Retention met with the CSUF Entrepreneurship Center Student Consulting Team to receive their final report.



Individuals in the photo are: (left to right, seated) OLLI’s Paul Herrick, Bob Kovacev and Bill Sampson; (left to right, standing) CSUF’s Dr. Sonny Nguyen; students Mark Davis, Yanmei Xie, Eduardo Jimenez, Helina Herrera and Quin Wardlaw; OLLI’s Janice Jeng; and student Abraham Garcia.

Photo by Joanne Hardy.

OLLI in the News\

The December 16 issue of the OC Register featured an article about OLLI’s 45th Anniversary Celebration that took place at the Arboretum on November 1.

The article gives a brief history of OLLI at Cal State Fullerton and features an interview with OLLI’s Executive Director Daisy Thomas, including a nice picture of Daisy speaking to the attendees. Also interviewed were OLLI’s Vice President Membership Debbie Maxwell and long-time member and revered two-term Past President Barbara Talento. Barbara will be honored at OLLI’s more-informal 45th Anniversary Celebration at the Ruby Gerontology Center on February 14.

Click on the following link to read “OLLI-CSUF celebrates 45 years of inspiring retirees to discover their passions” on the OC Register website: <https://www.ocregister.com/2024/12/16/olli-csuf-celebrates-45-years-of-inspiring-retirees-to-discover-their-passions/>.



ChroniCLE Team Lunch

December 13, 2024

The ChroniCLE team met for lunch to discuss plans for the new year and to just get to know each other better. Team members are, from left, Jim Di Tota (photo coordinator), Valerie Orleans (assistant editor), Alice Gresto (staff writer), Chris Shaw (editor), Keni Cox (staff writer) and Elaine Mitchell (staff writer). Missing are Lew Livingston and Mary Sampson (staff writers).

What's Happening at the Board



By Chris Shaw, Editor

Following are highlights from OLLI's Board of Trustees meetings on December 12, 2024:

- Accounting meetings have begun to transition OLLI from CSUF's EIP division to ASC.
- OLLI Board members, along with OLLI techies, are meeting with CSUF audiologists on an audio enhancement program for the Shapiro classrooms.
- The new Touch Net system has officially replaced the Cash Net program.
- Part time OLLI office employee Rishitha Bathini was promoted to the new OLLI Data Systems Engineer position.
- Total membership for the new academic year is 1,093, up from 1,022 last year. 16% of last year's members did not renew their membership.
- Hospitality, Membership and Programs VPs will meet before each semester to agree on and define all events. No procedures are changed at this time.
- Changes in the wording of the Ethical Environment Policy 2.6.1 were approved.
- An article in the OC Register highlighted OLLI's 45th anniversary.
- OLLI-CSUF Collaboration is working with University Health Sciences where OLLI members provide feedback on a mobile application and a website.
- A volunteer is needed to assist with delivering brochures and flyers to senior centers, libraries, and senior facilities in Anaheim, Anaheim Hills, Orange and Tustin.
- Spring semester registration began December 12.

New Programs for Spring Semester

By Chris Shaw, Editor

American Sign Language For All Ages

Offered by instructor Dawn Wilson, this course is a valuable language to learn, and the ability to engage and communicate with the hearing impaired is a great benefit. This course will provide a basic level of skill to communicate with a spouse, friend, grandchild and, if you yourself are hearing impaired, communicate more comfortably in a wide variety of situations. This course will introduce the ASL alphabet, concepts, words and signing styles. As the classes continue, your knowledge and ability to communicate will continue to expand and grow as you explore this beautiful language.

Introduction to Google Photos

Offered by instructors Dorothy Johnston and Danny Torres, this is beginner-level course designed for participants who want to learn how to store, organize, edit and share their photos with ease. Whether you're new to technology or just want to get more out of your pictures, this class will guide you through the simple steps to keep your photos safe, find your favorite memories, and even edit them — like cropping, brightening or adding filters. In addition, this course will showcase Google Photos' powerful search capabilities, using automated tagging to simplify photo organization and maintenance.

Navigating Cancer: A Survivor's Perspective

This course, offered by instructor Tom Arai, is about how newly diagnosed cancer patients and their caregivers are often at a loss where to start or even how to navigate the complexities and many issues involved in fighting any cancer. Most often, the diagnosis is unexpected and overwhelming. Often the patient and caregiver don't know where to turn and yet know that time is of the essence as many cancers grow very rapidly with deadly consequences. This course will provide general information, resources and a forum to help both initially and on an ongoing basis as patients and caregivers navigate cancer.

Smart Money Moves: Expert Strategies for Financial Planning

This three-part series, offered by Jeorjia Sun, is designed to start with the basics of finance and clarify some of the industry jargon, commonly used incorrectly. With a better foundation of finance basics, we move on to proper portfolio construction and close with more advanced financial planning considerations. The objective of this course is for participants to have a better understanding of their financial plan and walk away with some actionable items on areas that need to be addressed. Part I - Financial Planning Basics, Part II - Portfolio Construction and Part III - Estate and Tax Planning.

See the OLLI website for class schedules. These courses are not listed in the spring Blue Book, because they were added to the spring curriculum after the Blue Book was published.



OLLI

at California State University, Fullerton

“A Continuing Learning Experience”

1979 - 2024: 45 Years of Excellence

Ruby Gerontology Center, Room 7

P.O. Box 6870

Fullerton, California 92834-6870

(657) 278-2446

**Address Service
Requested**

Nonprofit Organization U.S. Postage PAID Permit No. 487 Fullerton, Calif

Dated Material

Do Not Delay Delivery

Not Receiving OLLI Emails?

If you have unsubscribed in response to **any** OLLI email, you have unsubscribed from **all** OLLI emails, including the ChroniCLE emails. If, for any reason, you are **not** already receiving OLLI emails about upcoming classes, events, the ChroniCLE and special notices, you can subscribe (or re-subscribe) by going to <http://bit.ly/OLLISubscription> and entering your email address, first name and last name.

If you still have trouble receiving emails from OLLI, send an email to ollinewsbytes@hotmail.com and include your name and email address.



How to Get the ChroniCLE by Email - Save Trees and Stamps!

Unless you elected not to receive emails from OLLI, you are currently receiving an email each month announcing the new ChroniCLE for the upcoming month with links to view or download the publications. You can also access the most recent ChroniCLEs through links in the weekly OLLI newsletters and on the OLLI website.

If you are receiving the ChroniCLE in the mail, but no longer want it mailed to your home, send an email to olli-info@fullerton.edu with **your name and address** stating: “Do **not** send me a ChroniCLE in the mail.” If you ever need the printed version, copies are always available in the OLLI office.

If you Need to Contact OLLI

Website: <http://olli.fullerton.edu>

Email: olli-info@fullerton.edu

Follow us on Facebook at <https://www.Facebook.com/OLLICalStateFullerton> and
Instagram at <https://www.instagram.com/ollicsuf/>