



Windows 10


WINDOWS 10 – END OF SUPPORT

MICROSOFT NO LONGER TO PROVIDE FREE SECURITY UPDATES



WINDOWS 10 SUPPORT ENDS OCTOBER 14, 2025

► This means that after this date, technical assistance, free software updates, and free security updates will no longer be available for the platform, which leaves only a few options



Windows 10 is dead!
Watch this video
and learn what you
NEED to know now!



WINDOWS 10
END OF SUPPORT
October 14, 2025

8-minute video

DETAILED BREAKDOWN



- ▶ End of support date: 14 October 2025
- ▶ Microsoft will stop releasing security fixes, feature improvements, product enhancements, and providing technical support for Windows 10
- ▶ Although support ends, Windows 10 PCs will continue to function, but they will be more vulnerable to cybersecurity risks without updates
- ▶ Windows Security (aka Defender) will continue to receive updates for a few years after, but these updates are NOT the same as “security fixes”
- ▶ Microsoft’s recommendation is to upgrade to Windows 11, if your device is capable...requires strict hardware requirements



Windows 11

Prepare for
Windows 10
end of support
by moving to
Windows 11

BENEFITS OF UPGRADING TO WINDOWS 11

- ▶ Provides a more secure environment with advance security features
- ▶ Maintains a familiar user experience from Windows 10, with a consistent layout and functionality, while introducing a more modern and streamlined UI design
- ▶ Optimized for speed and efficiency
- ▶ Includes a host of accessibility improvements designed for and with people with disabilities
- ▶ Copilot...AI provides straightforward answers to your searches

Check if your PC can be upgraded to Windows 11

- Check if your Windows 10 PC is **eligible to upgrade** for free to Windows 11 by selecting the Start button, then Settings > Update & Security > Windows Update > Check for updates
- If Windows 11 is available, select “Download and install”
- Accept the license terms
- Follow on-screen instructions





“ There will be no new security updates, non-security updates, or assisted support. Customers are encouraged to migrate to the latest version of the product or service. Paid programs may be available for applicable products. ”

MICROSOFT ANNOUNCEMENT OF WINDOWS 10 END OF SUPPORT

You do have other options:

1. Users can pay for extended updates to existing PC (one year subscription)
2. Change to a different operating system on the same device
3. Buy a new PC device with Windows 11 already installed
4. Buy a new device other than PC, e.g. iPad, Mac
5. Do nothing (NOT RECOMMENDED)...be cautious and alert

EXTENDED SECURITY UPDATES (ESU) for WINDOWS 10

- ▶ Microsoft plans to continue developing security updates for Windows 10, however these updates may come with a cost
- ▶ Extended Security Updates will be available on a subscription basis
- ▶ Consumers (i.e., you) can purchase a subscription to receive security updates for one year (October 2026); it does not include technical support or feature upgrades
- ▶ Subscription cost will be \$30...can be free
- ▶ A free ESU option is available by syncing Windows 10 device settings with a Microsoft account and backup to OneDrive or Rewards points exchange

8-minute video



LATEST NEWS

Major backtrack as Microsoft makes Windows 10 extended security updates FREE for an extra year — but only in certain markets

☰ Summarize

News By Zac Bowden published September 25, 2025

Microsoft has confirmed that it is making access to [Windows 10's extended support updates \(ESU\) program](#) completely free for an additional year, until October 14, 2026, for regions in the European Economic Area (EEA.) This change means users will no longer be required to sync their PC settings to the cloud via a Microsoft account for free access to extended security updates throughout the next 12 months.

Microsoft has confirmed the change in a statement to Windows Central:

"In the European Economic Area, we're making updates to the enrollment process to ensure it meets local expectations and delivers a secure, streamlined experience. Our goal is to support customers and provide them with options as they transition to Windows 11, with uninterrupted access to critical security updates."

CHANGE TO AN ALTERNATIVE OPERATING SYSTEM

- ▶ Linux OS in most cases is an excellent choice for extending the life of an existing PC running Windows 10
- ▶ Linux Mint is free and open-source, includes common apps (web browser, LIBRE office suite)
- ▶ What are the current needs/uses for the existing PC...this should include ALL users of the device
- ▶ If one chooses this route, be sure to create a backup file of any important existing files
- ▶ Linux is just as capable as Windows; Linux Mint is designed to be easy to use, especially for those migrating from Windows



WHAT WINDOWS END OF SUPPORT MEANS FOR OFFICE AND MICROSOFT 365

- ▶ If you are using Microsoft 365 on a computer running Windows 10, Microsoft strongly recommends that you upgrade to Windows 11
- ▶ After 14 October 2025, if you're running Microsoft 365 Apps on a Windows 10 device, the applications will continue to function as before...but there could be “performance and reliability issues over time”
- ▶ Microsoft will continue providing security updates for Microsoft 365 on Windows 10 for a total of three years, ending on October 10, 2028...will receive feature updates until August 2026
- ▶ If you're using Microsoft 365 on a PC running Windows 7/8/8.1, you'll no longer receive updates for the Office apps, including feature, security, and other quality updates



Previous versions of Office (e.g., 2016/2019) will reach end of life support on 14 October 2025. Microsoft strongly recommends that you upgrade to a supported version of Office

WINDOWS 10'S DEATH LOOMS

- ▶ Windows 10 end of support is October 14, 2025
- ▶ Windows 10 users have options
 - ▶ Upgrade to Windows 11, if current device capable
 - ▶ Purchase a \$30 subscription for one year of extended security updates (no technical support)
 - ▶ Switch to another operating system entirely (LINUX)
 - ▶ Purchase a new PC device with Windows 11 pre-installed
 - ▶ Purchase a device other than PC (e.g. iPad, Mac)
- ▶ ESU is rolling out to all Windows 10 devices that are running Windows 10, version 22H2
- ▶ **Fact: approx. 240 million PCs are NOT Windows 11 ready**

MANY CLING TO WINDOWS 10 DESPITE END-OF-LIFE

- ▶ Windows 11 adoption has shown signs of slowing down
- ▶ Millions of users, both personal and business, remain reluctant, or unable to upgrade...resistance to change
- ▶ Windows 11 has stricter hardware requirements and excludes older but still serviceable devices
- ▶ Unsupported Windows 10 devices will quickly become **prime targets** for malware, ransomware, and phishing attacks
- ▶ Windows 10 end of support is more significant than past versions because of its huge active user base, strict hardware upgrade requirements, and today's elevated cybersecurity risks

WHAT END OF SUPPORT MEANS FOR INDIVIDUALS

▶ Security Risks

- ▶ No more security updates → higher chance of malware, ransomware, and identity theft
- ▶ Anti-virus won't be enough once vulnerabilities go unpatched

▶ Upgrade Pressure

- ▶ Many PCs that run Windows 10 **can't upgrade to Windows 11** because of TPM 2.0, Secure Boot, or CPU requirements.
- ▶ For a lot of people, it's not just "install the new version" — it's "buy a new computer"

▶ Software & App Support

- ▶ Over time, popular apps (Chrome, Office, Adobe products, games) will stop supporting Windows 10
- ▶ Web browsers are usually the first to drop support, which breaks a lot of online services

▶ Cost Considerations

- ▶ Paid **Extended Security Updates (ESU)** may be available, but that's likely more attractive for businesses than for home users
- ▶ For individuals, the cost-benefit often favors new hardware

Factor	Windows 7 EOS (2020)	Windows 10 EOS (2025)
User base	Shrinking, but still large	Still the majority of Windows PCs
Upgrade path	Easy: free upgrade, most PCs supported	Hard: strict hardware rules, many PCs ineligible
Security risk	Moderate — cyber threats less advanced	High — ransomware & zero-days much more common
Business impact	Mostly planning/migration projects	Hardware + software + compliance burden
ESU program	Affordable 3-year extension	Likely costlier, huge demand
Disruption	Noticeable but manageable	Larger, more expensive, longer-lasting

WHAT MAKES WINDOWS 10 END OF SUPPORT DIFFERENT FROM WINDOWS 7



Windows 7 EOS was mostly about
catching up on upgrades

Windows 10 EOS is about **forced
hardware change + compliance risk +
stronger cybersecurity threats** — so the
impact is much more significant

This page has the information, tools, and tips you need to easily transition from Windows 10, Windows 8.1, and Windows 7, to Windows 11.

<https://www.microsoft.com/en-us/windows/end-of-support>

Windows 10

Windows 8.1

Windows 7

Support for Windows 10 will end in October 2025

After October 14, 2025, Microsoft will no longer provide free software updates from Windows Update, technical assistance, or security fixes for Windows 10. Your PC will still work, but we recommend moving to Windows 11. Windows 11 offers a modern and efficient experience designed to meet current demands for heightened security.



Windows 10 Extended Security Updates (ESU)

- › What is the Windows 10 Extended Security Updates (ESU) program?
- › What do Windows 10 Extended Security Updates (ESU) include? What does it exclude?
- › Who is eligible for the Windows 10 Extended Security Updates (ESU) program?
- › How will consumers enroll in the Windows 10 Extended Security Updates (ESU) program?
- › How long does Windows 10 Extended Security Updates (ESU) support Windows 10 on my PC?

✓ Do I have to enroll in Windows 10 Extended Security Updates (ESU) prior to October 14, 2025?

No, enrollment before October 14, 2025, is not mandatory—but it's highly recommended.

Enrolling by that date ensures customers receive the full benefit of the Windows 10 ESU coverage. Waiting until later won't extend the coverage window, so enrolling early gives you the most value.

✓ What happens if I enroll in Windows 10 Extended Security Updates (ESU) after October 14, 2025?

You can enroll after the end-of-support date, but the coverage period will not be extended. For example, if you enroll in January 2026, you'll only receive updates through October 13, 2026. Enrolling early ensures you get the full benefit of the program.

Windows 10 Consumer Extended Security Updates (ESU)

Windows 10 ESU prerequisites

To enroll in the consumer Windows 10 ESU program, make sure your device meets the following requirements:

- Devices need to be running Windows 10, version 22H2 Home, Professional, Pro Education, or Workstations edition.
- Devices need to have the latest Windows update installed. Learn how to [install Windows updates](#).
- The [Microsoft account](#) used to sign in to the device must be an administrator account.
 - The ESU license will be associated with the Microsoft account used to enroll. You may be prompted to sign in with a Microsoft account if you typically sign into Windows with a local account.
- The Microsoft account can't be a child account.

You must have a properly licensed and activated Windows 10 as well as a valid Product Key

Windows Update and select **Enroll now** on those additional devices. If you are already signed into the device with the same Microsoft account used to enroll your first device, select **Add device**. If you are not signed into the device with a Microsoft account, you will be prompted to sign in to the Microsoft account used to enroll the first device.



10 EXTENDED UPDATES

7-minute video

To enroll in the consumer ESU program, make sure your device meets the following requirements:

1. Devices need to be running Windows 10, version 22H2
2. Devices need to have the latest update installed
3. The Microsoft account used to sign in to the device must be an Administrative account (can NOT be a child account)
4. The ESU license is tied to your Microsoft account, so you may be prompted to sign in if you typically sign into Windows with a local account

Settings

Home

Find a setting

Update & Security

Windows Update

Delivery Optimization

Windows Security

Files backup

Troubleshoot

Recovery

Windows Update



You're up to date

Last checked: Today, 07:00

Check for updates

[View optional updates](#)

Windows 10 support ends in October 2025

Enroll in Extended Security Updates to help keep your device secure.

[Enroll now](#)

[Learn about the end of support](#)

Click "Enroll now"



Get the latest updates as soon as they're available
Be among the first to get the latest non-security updates,
fixes, and improvements as they roll out. [Learn more](#)



On

Settings

Home

Find a setting

Update & Security

- Windows Update
- Delivery Optimization
- Windows Security
- Files backup
- Troubleshoot
- Recovery
- Activation
- Find my device
- For developers

Windows



You're
Last ch

Check for upd

View optional up



Get the
Be among
and impr



Pause up
Visit Adv



Change
Currently



View up
See upda



Advance
Additional

Enroll in Extended Security Updates



Enroll in Extended Security Updates to stay protected



Support for Windows 10 ends on October 14th, 2025

Without security updates and technical support, your PC will be vulnerable to attacks and malware.



Get Extended Security Updates to keep your Windows 10 device safer

Enroll to receive critical security updates after support ends. That way you have more time to decide on your next PC - worry free.

Click "Next"

Maybe later

Next



(Option 1) Click the Enroll button, if using Windows Backup to OneDrive, the system should detect that your device is already backing up your settings and files to the cloud


Your ESU will be no extra cost!

*You can use your existing ESU license on up to 10 devices

Enroll in Extended Security Updates

Choose how you want to enroll

It's great that you are opting into Extended Security Updates. This is just one step on your way to Windows 11. Enroll in the Windows 10 Extended Security Updates by selecting any one of the easy options shown below:

**Extended Security Updates**
Valid until October 2026

☒

Back up your PC Settings
Save your settings, apps, and credentials so you can move to your new Windows 11 PC.
No extra cost

☐

Redeem Microsoft Rewards points
You have 12,846 points
1,000 points

☐

One time purchase
\$30.00 plus applicable taxes

Go back

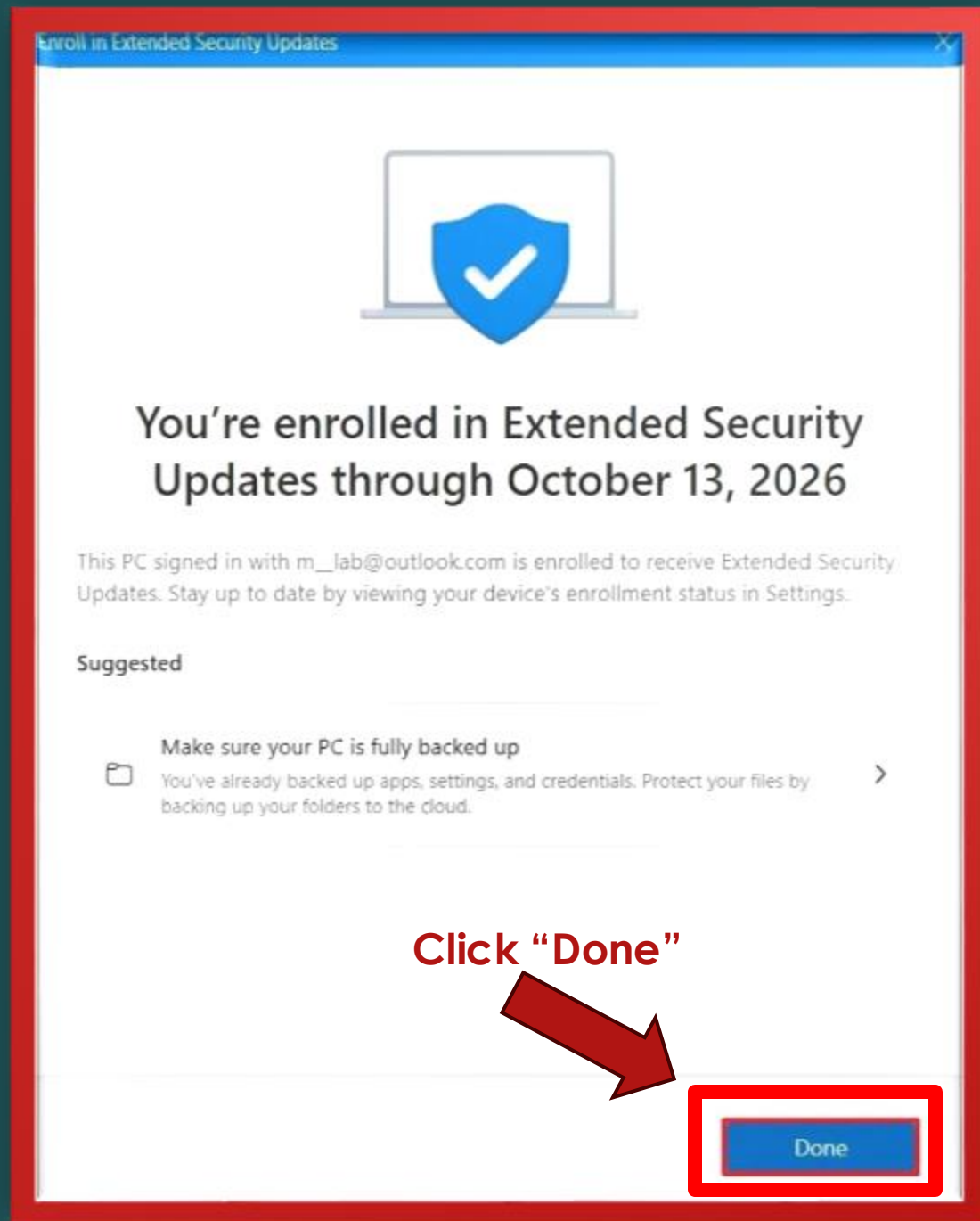
Next

(Option 2) If not currently using Backup, select the enrollment option, including “Back up your PC settings,” “Redeem Microsoft Rewards points,” or “One time purchase.”

Click “Next”

Continue with the on-screen directions to complete the enrollment

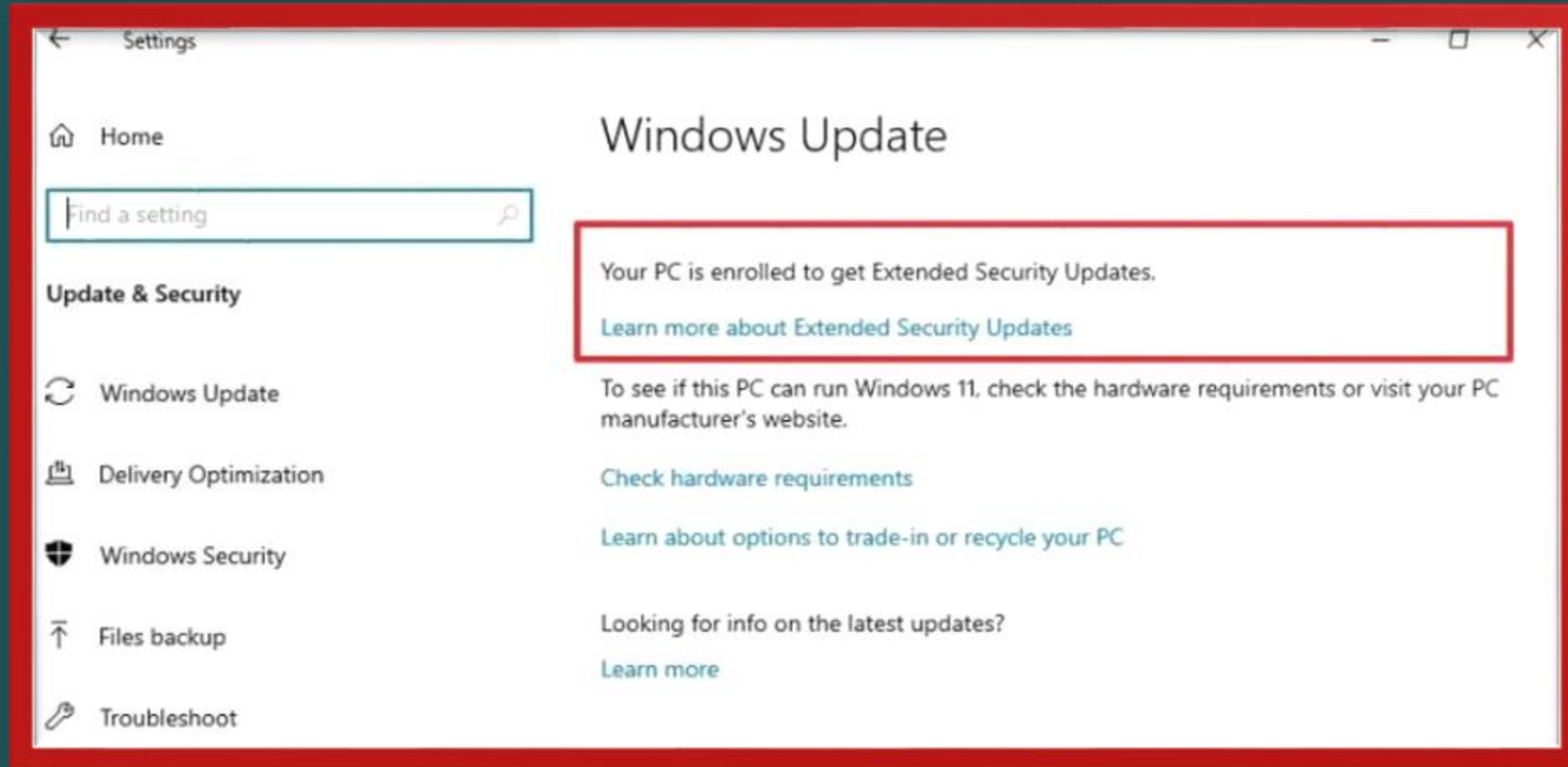
*You can use your existing ESU license on up to 10 devices



Once you complete the steps, the device will continue to receive security updates for an additional year

***You can use your existing ESU license on up to 10 devices**

To tell if your computer is enrolled in the program, go to Windows Update



QUESTIONS

A 3D rendered image featuring a central, brightly glowing yellow question mark. This central figure is surrounded by several other question marks of varying sizes and colors, including dark blue and black, which are scattered across a dark, reflective surface. The lighting creates a strong glow around the central question mark, casting a warm yellow light on the surrounding area.