



OLLI ChroniCLE

OSHER LIFELONG LEARNING INSTITUTE at CALIFORNIA STATE UNIVERSITY, FULLERTON

"A Continuing Learning Experience"

September 2024

Volume XLVI Number 1

President's Message

By Vickie Hite, President, OLLI-CSUF

I want to welcome all of our members, both long-tenured and new to our program, to our 45th academic year. We are looking forward to returning to our favorite classes and checking in on the new offerings for the fall semester.



Sue Batie, Vice President Programs, informs me that we have

99 full semester classes. We have four new courses: "Homelessness in Orange County," "Inspiration: How Sturdy a Foundation," "Religion and Politics in the Fall Election," and "Stuff! A Lifecycle." There will be special presentations by the Grand Jury and League of Women Voters informational groups. And of course, all of our planned social events. We should all be quite busy this fall.

As I noted in my last message, we continue to have change in our OLLI organization. Pete Saputo has decided to retire from his position as Vice President Facilities. Pete has been a steadfast member of the Board of Trustees, and his commitment and dedication will be missed. We thank Pete for his years of service to our OLLI. However, you will still see him behind the wheel of the OLLI Trolley!

Tony Package will step in to fill the vacancy that Pete's retirement has created, and we appreciate his years of experience in this position.

Another change is the loss of Lina Segura from our OLLI office. Lina needed to step away from OLLI for personal reasons, and it is truly a loss for our team. We will miss her pleasant and efficient manner in getting the job done. However, on an

President's ... Continued on Page 3

How Lifelong Learning Began at Cal State Fullerton

Editor's Note: Betty Robertson—fondly referred to as the "Godmother of CLE"—wrote the following article shortly before her passing in November 2013. She was the last surviving member of the original founders of CLE, which is now OLLI.

By Betty Robertson



A bronze plaque on the Ruby Gerontology Center names the founders of Continuing Learning Experience. I've been actively involved in CLE from day one. Founding President Leo Shapiro

anointed me "CLE's Godmother" on a special plaque given to me with a Waterford crystal necklace when I retired and officially joined CLE.

In 1979 CLE, the forerunner of OLLI, was born at CSUF in the OEE (Office of Extended Education), where I was the Director of Community Programs. My charge was to develop university-level offerings for groups not being served by the CSUF state-supported degree programs. The goal was outreach to new people who could benefit from university-level experiences. The growing number of retired professionals in the aerospace business and education were natural prospects for this effort.

I wrote the original PTE (Partners in Education) grant to President Donald Shields. It was based on the concept that members would pay their own way and be volunteers in developing their own organization. This included developing programs using their expertise—a program of, by and for retirees. The original PTE grant was called SEE

How Lifelong ... Continued on Page 6

President Vickie Hite
 Vice President Administration Robert Kovacev
 Vice President Programs Sue Batie
 Vice President Communication Jim Di Tota
 Vice President Membership Debbie Maxwell
 Vice President External Relations Bill Sampson
 Vice President Facilities Tony Package
 Vice President Hospitality Lisa Sewell
 Vice President Technology Paul Herrick
 Treasurer Ann Sparks
 Secretary Renee Cabrera
 Chris Shaw (tashawc01@gmail.com), Editor; Keni
 Cox, Assistant Editor; Alice Gresto, Elaine Mitchell and
 Mary Sampson, Staff Writers
 Photography Coordinator: Jim Di Tota

Desktop Publishing: Celia Reynolds

**Easy Ways to Support OLLI-CSUF:
 As the kids say, it’s a no-brainer!**

*By Hart Roussel, Senior Director, Planned Giving,
 CSUF University Advancement*

If OLLI-CSUF is an important and enjoyable part of your life, you may want to consider some easy ways to support OLLI through charitable giving. The best way to think about this is, there are ways you can give during your lifetime, which provide a charitable income tax opportunity, or there are ways you can give after your lifetime, through your estate, which do not provide charitable tax deductions but cost you nothing today.

Two of the easiest ways to **give during your lifetime**, which provide tax benefits, are the **IRA Qualified Charitable Distribution (QCD)** and the **Charitable Gift Annuity (CGA)**.

The **IRA Qualified Charitable Distribution (QCD)** allows you to make charitable distributions from your required minimum distribution (RMD) of up to \$105,000 (or double that for a couple) while avoiding income taxes on your RMD. The process of making a QCD is easy and begins by contacting your IRA custodian. Please visit <https://CSUFPlannedGift.org> to learn more about the **IRA QCD**.

The **Charitable Gift Annuity (CGA)** is a

OLLI is a program of the CSU Fullerton Auxiliary Services Corporation administered by University Extended Education, California State University, Fullerton

great opportunity to convert low yield assets into a charitable tax deduction and a new income stream. CGA rates, which are related to your age, are wonderfully high right now. For example, a 75-year-old would receive an annuity return of 7% for life by converting a low yield CD into a CGA. Please visit <https://CSUFPlannedGift.org> to learn more about the **CGA**.

Two of the easiest ways to **give after your lifetime**, which cost you nothing today, are through your estate by **Charitable Beneficiary Designation** or a **Charitable Bequest**.

By designating OLLICSUF as a **charitable beneficiary** of all or part of qualified retirement assets or life insurance policies, you can provide a significant gift to OLLI. The process is easy and involves completing the beneficiary designation form provided by your financial institution. The best part, doing this costs you nothing today and allows you to retain control over your asset during your lifetime. Please visit <https://CSUFPlannedGift.org> to learn more about **Beneficiary Designations**.

Making a **charitable bequest** to OLLI-CSUF is also very easy through your revocable living trust. Ask your estate attorney to include OLLI for a specific or percentage bequest. Again, the best part, doing this costs you nothing today and allows you to retain control over your assets during your lifetime. Please visit CSUFPlannedGift.org to learn more about **Charitable Bequests**.

Planned Gifts to support OLLI-CSUF are coordinated through University Advancement. If you’re interested in establishing your legacy and making a lasting impact at OLLI-CSUF, please contact our Office of Planned Giving at 657-278-3947 or CSUFPlannedGift@fullerton.edu.

**Bird Watching Planned
 With the Audubon Society
 Friday, October 18**

Orange County’s Sea and Sage Audubon Society (a chapter of the national Audubon Society) will be our host for this slow-paced outing to the San Joaquin Wildlife Sanctuary in Irvine.

Sign-ups start September 16 in the OLLI office. See the flyer for details and the sign-up coupon.

New Programs Starting in Fall

By Chris Shaw, Editor

Homelessness in Orange County (Open to the Public)

This course explores topics related to homelessness in Orange County. In addition to overall demographics based on the latest Point In Time Count as well as County of Orange programs, we will hear about programs in the North Service Planning Area, comprised of the cities of Anaheim, Brea, Buena Park, Cypress, Fullerton, La Habra, La Palma, Los Alamitos, Orange, Placentia, Villa Park, Stanton and Yorba Linda. Experts recruited by the class coordinator will share information programs that assist individuals experiencing homelessness on their journey from the street, to shelter and recuperative care and finally to supportive and affordable housing.

Coordinator Debbie Kegel will offer this course on designated Thursdays (September 19, October 3, 17 & 31, and November 14) at 10:15 a.m.-11:45 a.m. in Mackey Auditorium and livestreamed.

Inspiration: How Sturdy a Foundation (Open to the Public)

This course explores the Bible and differences in its interpretation. How do these interpretations inspire us or provide inspiration that may be seen through the lens of other views? You'll be exposed to mystical scene-setting literature whose "inspiration" is seldom appreciated for its complex, artistic modernism. You will be immersed in evidence and arguments that challenge traditional understandings with alternatives. The class is designed interactively to engage every member in a unique experience that is focused and wide-ranging, and not alienating—enjoyable and enriching dialogs, no matter one's comfort zone.

Instructor Dr. Craig Miller and coordinator Ellie Monro will offer this course every Wednesday (September 11, 18 & 25, October 2, 9, 16, 23 & 30, November 6, 13 & 20 [27 no class], and December 4) at 1 p.m.-2:30 p.m. on Zoom only.

Religion and Politics in the Fall Election

The First Amendment has kept religion from having an official role in government but also has guaranteed that religion could be freely practiced.

OLLI Office No Longer Accepts Checks

Effective August 1, the OLLI office will no longer accept payments by check. Only credit or debit cards will be accepted from members for course fees and all other charges, including trip and event registrations. This will make processing payments more efficient and reduce costs by avoiding ASC fees associated with check processing and employee resources.

President's ...Continued from Page 1

exciting note, Daisy has been able to fill our vacant office positions, and we will be fully staffed as we enter this fall semester. We will have two full time employees; Celia Reynolds will be at the front desk, as always, to greet and assist OLLI members. We are excited to welcome Corina Pineda to be our Office Administrator. She will assist Daisy with all of our operational procedures. Corina is a steal from the world of Disney. She will bring a tremendous amount of creative and design experience with her. We are adding a new part-time Bookkeeping Analyst, Donna Miranda. Donna is recently retired from CSUF with 40 years of experience in her job function. She will also be a new OLLI member for this fall. Also, we have two part-time student employees to round out our team. Rishitha Bathini and Akemi Tanga. Rishitha is a grad student and is our Data Systems Engineer. Akemi is a junior in the CSUF Business program. We will be well prepared to take on the new academic year.

I would like to add that we have three student workers diligently working in our Distance Learning Lab. Trent and Ashley are behind the scenes making sure that our recorded programs are edited properly and available on our OLLI website. We will be adding an additional student worker to this team early in the fall.

This year of change continues to roll right along. However, I feel we will be stronger for the changes and for the new talent we are bringing to our organization. To steal a word from Ginger Barnhart on OLLI's newsletter team—Onward!

New Programs ...Continued on Page 7

**Fourth of July Celebration and Veterans Recognition
And DAR Pinning Ceremony: June 28, 2024**

Photos by Jim Di Tota and Lisa Sewell



OLLI Cinco de Mayo Social: May 3, 2024

Photos by Jim Di Tota



How Lifelong...Continued from Page 1

(Senior Educational Experience), but it changed. We have had three names, SEE, CLE and now OLLI.

At the very beginning, with the grant under consideration, one persuasive CLE founding member objected ardently to the word “senior” in SEE’s title. She felt it categorized her and she didn’t like it. In the end, they changed the name to CLE and it stayed that way the next twenty-seven years. CLE became OLLI by joining the OLLI national network of 100 other university retiree programs, and by accepting a \$1 million endowment.

Finding volunteers to start the proposed program was a crucial challenge. I really lucked out finding a remarkable group of leaders who made CLE happen.

In March 1979 CLE received the PIE grant startup funds and an official Charter signed by the University president. The first programs were offered that fall in Mahr House and CLE flourished from the start. The CLE program and membership grew rapidly and soon outgrew the small campus quarters. And CLE members responded brilliantly.

Led by two former CLE Presidents, Leo Shapiro and Bill Coston, it took the dogged participation of the whole CLE membership and a remarkable eight years of very hard work to make the organization’s current home a reality.

Leo’s dedication and vision are legendary. He led the drive to plan, build and fund the RGC (Ruby Gerontology Center), which opened in 1988. Today, members can see Leo’s many awards in a glass case along with a bust on a pedestal in the corridor en route to the coffee room. (Incidentally the bust was sculpted by CLE’s Dr. Francis “Bud” Mackey, for whom our auditorium is named).

Leo died at 102, but his great spirit lives on in the RGC and today’s OLLI.



Join the OLLI Communications Team! Writers and Editors Needed

The OLLI Communications Team is seeking members to assist in three different areas.

We need primary and backup editors to assist in creating the weekly OLLI newsletters and other OLLI emails. Candidates must be comfortable using word processing programs and be willing to learn to use Constant Contact, an online marketing tool.

This is an opportunity to be a part of the “behind the scenes” work that keeps OLLI members informed about classes, events and activities. If you are interested in this opportunity, please contact us at ollinewsbytes@hotmail.com.

The ChroniCLE has an opening for a staff writer. Staff writers are assigned to write an article on average once in six or eight weeks, usually about a person or group within OLLI, and they may contribute their own ideas for articles, subject to approval by the editor. This typically involves meeting and interviewing the subject of the article, drafting an article that observes a defined length and style standards, and submitting it by a due date for publication with their byline.

If you want to provide in-depth stories about OLLI and its members to the OLLI membership and participate in chronicling OLLI’s history, contact Chris Shaw at tashawc01@gmail.com.

The Blue Book Program Catalog has an opening for a copy editor. Copy editors proofread and edit the program descriptions written by the program instructors or coordinators as well as other information in the Blue Book to conform with defined grammatical and other style standards. This takes an eye for detail, the ability to work as part of a team and knowledge of English. The time commitments are several, short periods three times a year, corresponding to the due dates for publishing the fall, spring and summer Blue Books.

If you want to be part of the team that produces a high quality Blue Book that all OLLI members need and use to learn about courses, events and activities at OLLI, contact Jill Patterson at jillpatterson@yahoo.com.

OLLI-CSUF Collaboration Steering Committee Meeting

By Sue Mullaly, Chair, OLLI-CSUF Collaboration Committee

The annual CSUF Steering Committee meeting was held on Monday, June 24, 2024, in Shapiro Hall. The OLLI Collaboration Team and Board members meet with the Associate Deans of the CSUF colleges to share the many Collaboration projects our OLLI volunteers have engaged in with CSUF students and faculty in the previous year and to solicit input from the associate deans to identify new opportunities to assist with student success.

In attendance were Dr. Eileen Walsh, Associate Vice President for Academic Affairs; Daisy Thomas, OLLI Executive Director; Karen McKinley, Senior Director, Extension and International Programs; and Associate Deans: Dr. Dave Mickey, Arts; Dr. Carl Wendt, Humanities and Social Sciences; Dr. Kim Case, Education; and Dr. Sean Walker, Natural Sciences and Mathematics. OLLI participants included Vickie Hite, OLLI Board President, Bill Sampson, OLLI Vice President External Relations, six Board members, and fourteen Collaboration members. Sue Mullaly, OLLI Collaboration Committee Chair, facilitated the meeting.

This year (2023-2024) OLLI members in conjunction with OLLI-CSUF Collaboration contributed over 2,700 volunteer hours as part of 135 projects impacting the students and faculty of the nine CSUF colleges and twelve CSUF organization partnerships. Over 60 OLLI members volunteered in one-time, weekly or longer-term opportunities. A new collaboration was initiated with the ASI (Associated Students Inc.) related to the CSUF Basic Needs Program. OLLI members generously contributed to the Pantry, Tuffy's Closet for business clothing and hygiene products, the LGBTQ Resource Center Gender Affirming Closet, and the CSUF Children's Center. This year, two new scholarships were added to the Aging Studies Scholarship Program for a total of three student scholarships of \$1,500 each, all supported by OLLI member financial contributions.

The meeting concluded with a short video showing some activities of the past year, followed

by small group breakout discussions to discover ways to expand opportunities for interaction between OLLI members and students. OLLI and CSUF are so pleased with the value these programs add to student success and to the lives of our generous volunteers.

OLLI-CSUF Collaboration encourages all members to experience the joy and fulfillment of working in multiple types of volunteer opportunities with the students and faculty of CSUF. Your wisdom and life experience enhance the lives of those who appreciate YOU!

To learn more about OLLI-CSUF Collaboration and our volunteer opportunities, watch the video on YouTube by clicking on [OLLI Collaboration in Action 2024](#). You can also visit our webpage at <https://OLLI.fullerton.edu> and click on the Volunteer tab.

If you would like to be contacted, click on [Collaboration Information Inquiries](#) and fill out the form or email Sue Mullaly at Smullaly@csu.fullerton.edu.

New Programs ... Continued from page 3

This has resulted in a legal dance between the two, with the Supreme Court as arbiter of the proper role of each. The course will start by summarizing key high court decisions on this issue. In the weeks following, we will look at several areas of public life where ethics and morality may affect how people vote. These include abortion, immigration, gun rights, truth and accuracy in media, climate change, the wars in Israel-Palestine and Ukraine, the Christian-nationalism-vs.-secularism debate and the question of respect and civility in the election campaign. The aim is to provide information on these issues, not advocacy. After the election itself, the final sessions will provide a forum for assessing where the nation stands and how we can go forward despite our deeply held differences.

Instructor Ben Hubbard and coordinator Jeanette Reese will offer this course on alternate Tuesdays (September 17, October 1, 15 & 29, November 12 [26 no class], and December 3) at Noon-1:30 p.m. in Mackey Auditorium.

New Programs ... Continued on Page 9

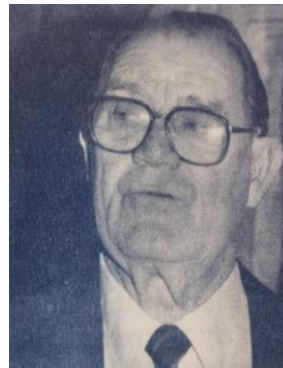
**CLE's (Now OLLI) Founding Members
Celebrating 45 Years of Lifelong Learning at Cal State Fullerton**



Leo Shapiro



Florence Arnold



Russell Ball



Ernest Lake



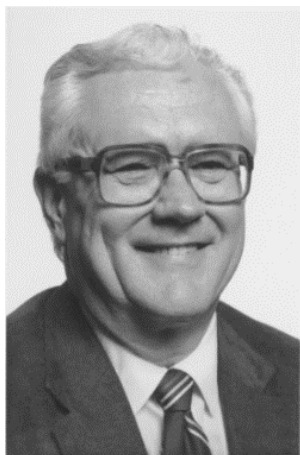
Lucien Miner



Ray Nichols



Charles L. Ruby



**David Walkington
(Ex-officio Member)**



**Betty Robertson
(Ex-officio Member)**



Leo Shapiro meets with Betty Robertson and David Walkington to discuss the concept of a self-supporting educational unit on campus for older adults to access lifelong learning.

To see CLE/OLLI's complete historical timeline, go to the OLLI website at <http://oli.fullerton.edu> and click on About OLLI-CSUF, then click History and Timeline.

Pros & Cons: California Ballot Issues 2024

A member of the League of Women Voters North Orange County will explain each statewide ballot measure on the November ballot. Arguments for and against, along with the probable fiscal impact of each measure will be presented factually and without bias so attendees can make their own decisions. There will be time for questions at the end of the presentation.

Note: This forum takes place during Mike Stover's "The American Magazine" course and is for OLLI members only.

The League of Women Voters and coordinators Linda Lockwood and Jay Messner will offer this one-day course on Tuesday, September 17 at 10:15 a.m.-11:45 a.m. in Mackey Auditorium and virtually on Zoom and livestream.

Stuff! A Life Cycle

Stuff. We have it, we love it, we hate it. So where does it come from? How does it get to us? And where does it go when we send it "away?" We'll examine the life cycle of "stuff," as well as the cycle of our relationship with it, and see where it takes us ... from memory lane to "everyday ecology" to a brush-up on sociology. Let's revisit our place in nature and how we are acting as a part of an ecosystem. We can be healthier, feel better, and save money.

Note: This classroom course is a companion piece to a series of special events outdoors with dates and times to be announced.

Instructor/coordinator Maureen B. Latour will offer this course on alternate Thursdays (September 12 & 26, and October 10 & 24, and November 7 & 21) at 10:15 a.m.-11:45 a.m. in Mackey Auditorium and livestreamed.



What's Happening at the Board

By Chris Shaw, Editor

- Following are highlights from OLLI's Board of Trustees meetings on July 11, 2024:
- OLLI office staff member, Lina Segura, resigned effective July 12. Temporary employee Rishita Bathini will work full time though the end of summer. A full-time replacement for Lina has been hired and will start August 5.
- Executive Director Daisy Thomas is finance/accounting lead with back up from President Vickie Hite and Treasurer Ann Sparks until a replacement for Ying Lu is hired.
- Mandatory training for OLLI's volunteers is scheduled for August 26, 27 & 28 and September 4 & 5 from 9-11 a.m. in Shapiro. This is a mandatory annual training requirement for all volunteers.
- Event/trip organizers should submit D-11 forms six weeks prior to the event/trip. Additional approvals are now required for amounts exceeding \$2,500, raised from the previous \$1,000. Training on this procedure is planned.
- OLLI Trolley drivers are trained and certifications should be done in two weeks.
- The Board approved that OLLI members can volunteer to participate in CSUF's AD/ ADRD clinical trials.
- First draft of the new member handbook was presented and Board members were invited to comment.
- Effective August 1, the OLLI office will no longer accept payments by check, only credit or debit cards.
- Pete Saputo resigned as Vice President Facilities effective July 12.





OLLI

at California State University, Fullerton

“A Continuing Learning Experience”

1979 - 2024: 45 Years of Excellence

Ruby Gerontology Center, Room 7

P.O. Box 6870

Fullerton, California 92834-6870

(657) 278-2446

**Address Service
Requested**

Nonprofit Organization U.S. Postage PAID Permit No. 487 Fullerton, Calif

Dated Material

Do Not Delay Delivery

Not Receiving OLLI Emails?

If you have unsubscribed in response to **any** OLLI email, you have unsubscribed from **all** OLLI emails, including the ChroniCLE emails. If, for any reason, you are **not** already receiving OLLI emails about upcoming classes, events, the ChroniCLE and special notices, you can subscribe (or re-subscribe) by going to <http://bit.ly/OLLISubscription> and entering your email address, first name and last name.

If you still have trouble receiving emails from OLLI, send an email to ollinewsbytes@hotmail.com and include your name and email address.



How to Get the ChroniCLE by Email - Save Trees and Stamps!

Unless you elected not to receive emails from OLLI, you are currently receiving an email each month announcing the new ChroniCLE for the upcoming month with links to view or download the publications. You can also access the most recent ChroniCLEs through links in the weekly OLLI newsletters and on the OLLI website.

If you are receiving the ChroniCLE in the mail, but no longer want it mailed to your home, send an email to olli-info@fullerton.edu with **your name and address** stating: “Do **not** send me a ChroniCLE in the mail.” If you ever need the printed version, copies are always available in the OLLI office.

If you Need to Contact OLLI

Website: <http://olli.fullerton.edu>

Email: olli-info@fullerton.edu

Follow us on Facebook at <https://www.Facebook.com/OLLICalStateFullerton> and
Instagram at <https://www.instagram.com/ollicsuf/>