



MANGA

By Barbara Glaeser

WHAT IS MANGA?

- Manga, or “mangaka” is the term given to Japanese comic books and graphic novels. The word *manga* can be translated as “humorous pictures” and are published in Japan similar to the daily comics in the West.
- Authors of mangaka write only original content and many start by self-publishing. In fact, self-published works, or *doujinshi*, are incredibly popular.

ORIGIN OF MANGA



- The creation of Manga (and Anime, which is animated manga), has been credited to [Osamu Tezuka](#).
- Although best known (especially outside Japan) as the creator of [Astro Boy](#), the “boy robot with 100,000 horsepower”, he was instrumental in developing (if not outright creating) nearly every genre of manga in existence today.
- Despite being often referred to as the “Walt Disney of Japan”, Helen McCarthy, author of [The Art of Osamu Tezuka: God of Manga](#), sums it up best by saying Tezuka “was more like Walt Disney, Stan Lee, Jack Kirby, Tim Burton, Arthur C. Clarke, and Carl Sagan all rolled into one incredibly prolific creator” (2009, p.8).

MANGA'S DISTINCTIVE ART STYLE

- Manga usually follows the traditional style as found in Japan. Japanese manga is to be read from the right side to the left, opposite of traditional American books, and the panels are read right to left as well.
- Manga characters almost always have large eyes, small mouths, and abnormal hair color. These things give their characters a very western look to them. Manga such as "Akira," however, has gone against this grain.
- Manga characters usually show overexaggerated emotions. When a character cries, tears pour out in buckets; when they laugh, their face seems engulfed by the size of their mouth, and their eyes become slits. An angry character has rosy cheeks and steam roiling around the body.

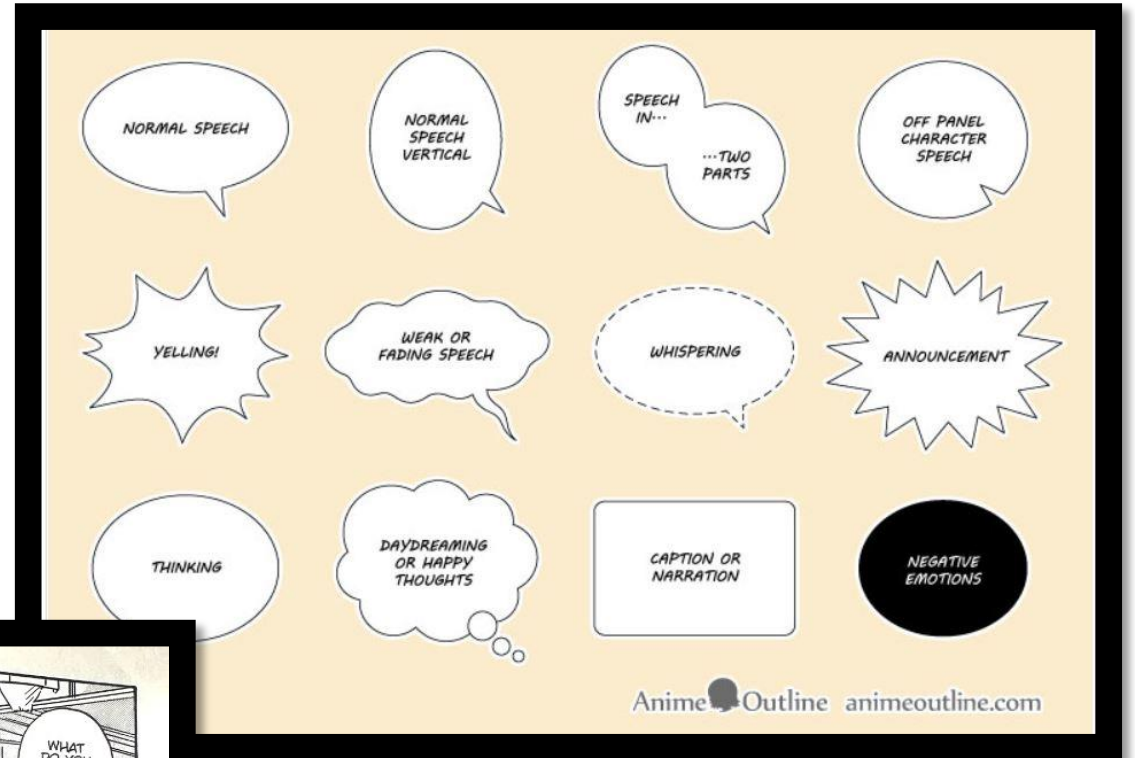
HOW TO READ MANGA

Manga usually follows the traditional style of reading as found in Japan. Japanese manga is to be read from the right side to the left, opposite of traditional American books, and the panels are read right to left as well.



MANGA STYLES

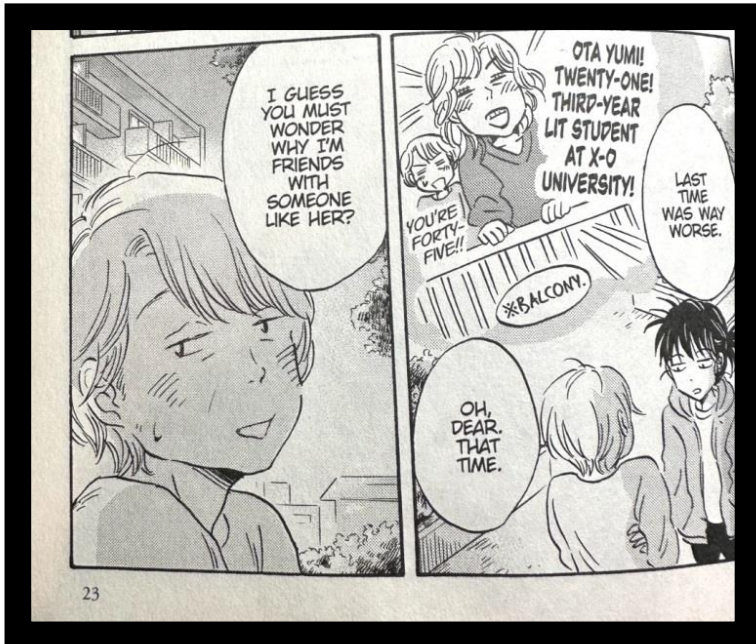
- **Speech Bubbles (Fukidashi)**
- Speech bubble lines reflect the mood of the message
 - Solid, rounded: Normal speech
 - Soft: Weak or Fading
 - Multi-Bubble: Pause or Unsure
 - Black: Negative Emotion
 - Solid, square rectangle:
 - Caption or Narration



- **Dots – Side Marks**

- Express emphasis
 - Like italics or bold text. Stress something the reader might overlook
- Mark shocking or surprising information
- Indicate wordplay, something misspelled on purpose
- Something character reacts to, takes as an insult

MANGA STYLES



- **Sound Words**

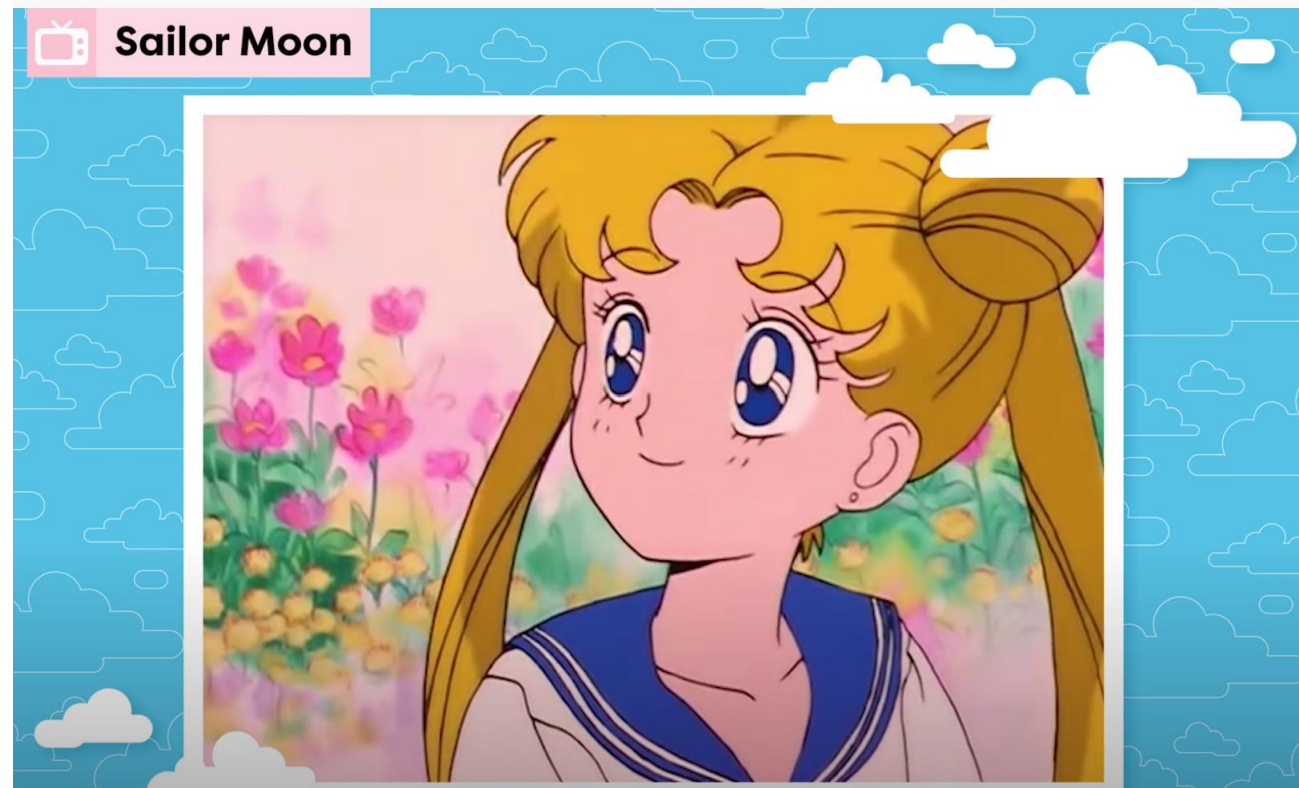
- The Japanese language has more than three times the number of onomatopoeic words compared to the English language.
- Sound word categories include:
 - *Giongo*: Sounds made by inanimate objects.
 - *Giseigo*: Sounds made by living things.
 - *Gitaigo*: More abstract class of expression, refers to words that depict psychological states or bodily feelings, or non-auditory senses.

MANGA STYLES



A SAMPLE OF MANGA

- This video is about one of the signature characteristics of anime but it gives a great history of the genre.
- <https://www.youtube.com/watch?v=9YxAG9pspEc>



IF MANGA IS WRITTEN BY JAPANESE ARTISTS, WHY DO MOST CHARACTERS LOOK CAUCASIAN?

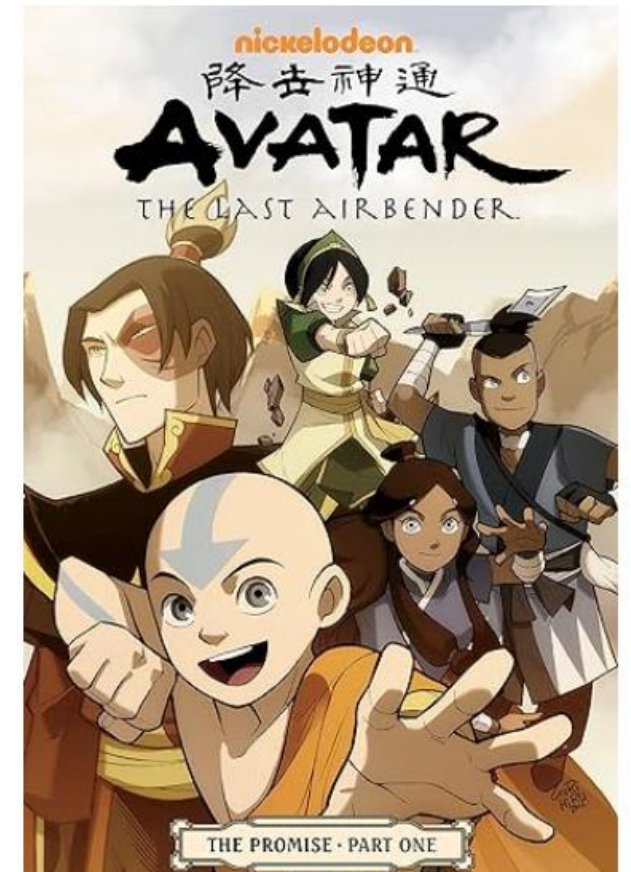
- <https://youtu.be/8jHBGexwlf0>



Edward Elric from **Full Metal Alchemist** by Hiromu Arakawa

WANT TO READ MORE?

- **Different kinds of manga have become known in Japan. When getting into manga, it can help to know what is what**
 - *Shōnen*: boys' manga, pronounced *show-nen*
 - *Shōjo*: girls' manga, pronounced *show-joe*
 - *Seinen*: men's manga, pronounced *say-nen*
 - *Josei* (or *redikomi*): women's manga, pronounced *joe-say*
 - *Kodomo*: children's manga, pronounced *kow-dow-mow*
- **Check out these series if you're looking for a place to start with manga:**
- **Classics**
- Akira
- Dragon Ball
- Gunsmith Cats
- **More Contemporary**
- Avatar: the Last Airbender and Legend of Korra
- Naruto
- Full Metal Alchemist





REFERENCES

- <https://japancraft.co.uk/blog/manga-anime-difference/>
- <https://www.liveabout.com/manga-world-101-805003>