

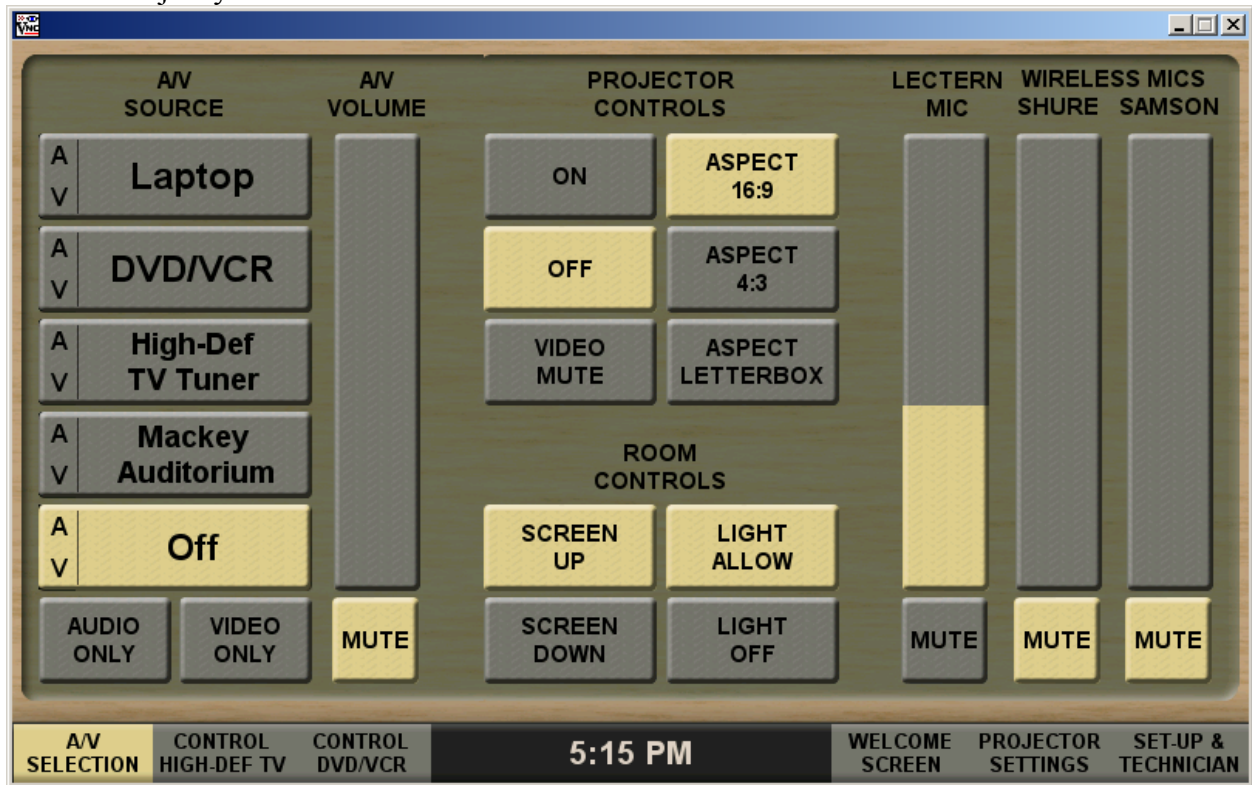
## OLLI AUDIO VISUAL EQUIPMENT GUIDE

### USING A DVD OR VCR

Activate the touch screen by touching it. In general tap on the screen at the appropriate controls. Slide your finger to control the volume on the appropriate volume control.

Select the A/V Selection screen from first button on the left or from the touch-screen button labeled A/V Selection.

Figure 1: Screen for AV Selection. Most likely, this will be the only screen you will need to use to do the majority of AV controls.

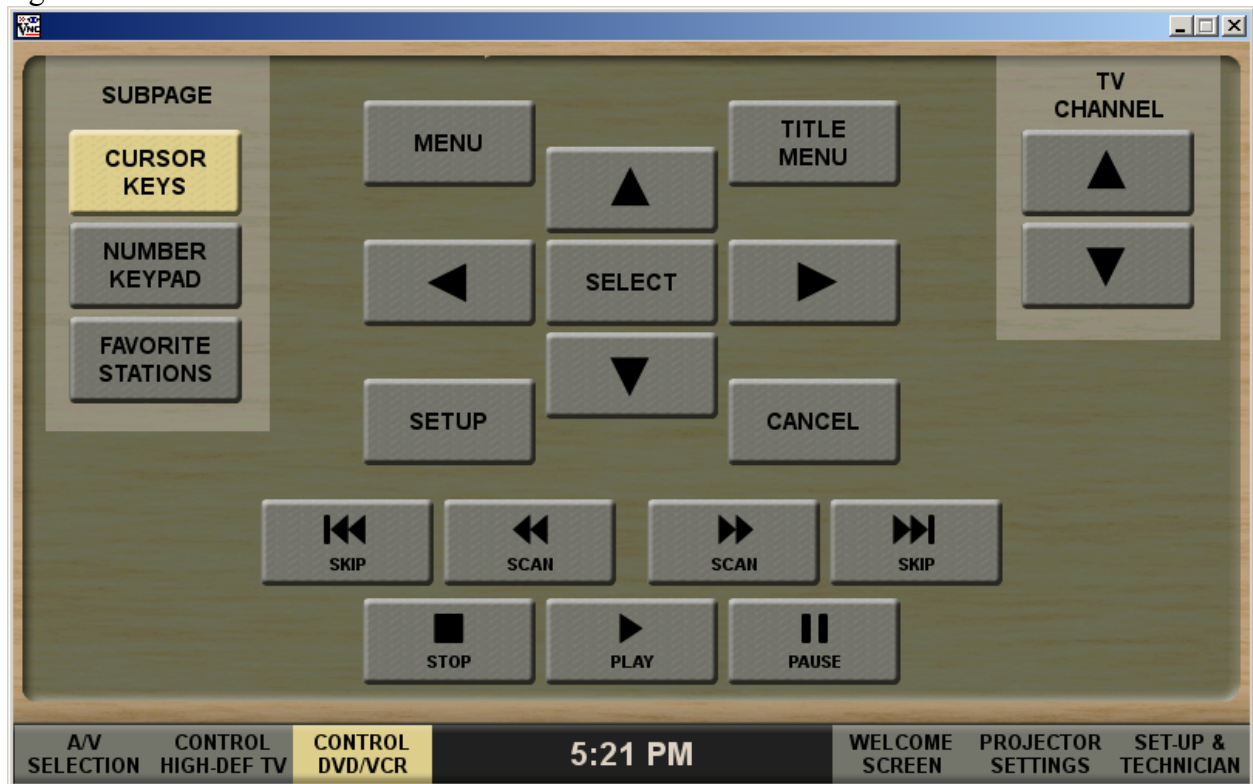


### TO USE THE DVD PLAYER:

1. From the touch-screen (see Figure 1) Select “DVD/VCR”—the lights in the front of the room will dim, the screen will lower automatically, and the LCD projector will turn on.
  - a. The “AV VOLUME” controls the loudness of the sound and can also be muted by touching the “MUTE” icon.
  - b. The projector can be temporarily “muted” (not projecting) by pressing the “VIDEO MUTE” button. This will allow you to darken the screen for other activities without turning off the projector.
  - c. If you need to control the room lights manually, click on the “LIGHT ALLOW” button.
  - d. Use the “AV OFF” button to turn off all the equipment when you are done.

## Using the DVD/VCR player in AB and CD

Figure 2. View of the screen to control DVD and VCR functions.



### TO CONTROL THE DVD OR VCR:

1. Select the DVD/VCR menu screen by tapping on MENU on the touch-screen.
2. To navigate the menu items use the arrows and touch SELECT to make a choice.
3. Touch the PLAY button to play, PAUSE, or STOP the DVD/VCR.
4. If you need to move quickly forward or backward, touch the appropriate icon to either SKIP to the beginning or SCAN backwards toward the beginning, or SCAN forward or SKIP to the end.
5. To control the sound volume, go to the AV SELECTION screen (Fig. 1) and slide the AV VOLUME control to the appropriate sound volume from the DVD or VCR.
6. To temporarily block the LCD projection, use VIDEO MUTE in the AV SELECTION screen (Fig. 1).
7. To have manual control of the room lights, select LIGHT ALLOW from the AV SELECTION screen (Fig. 1).